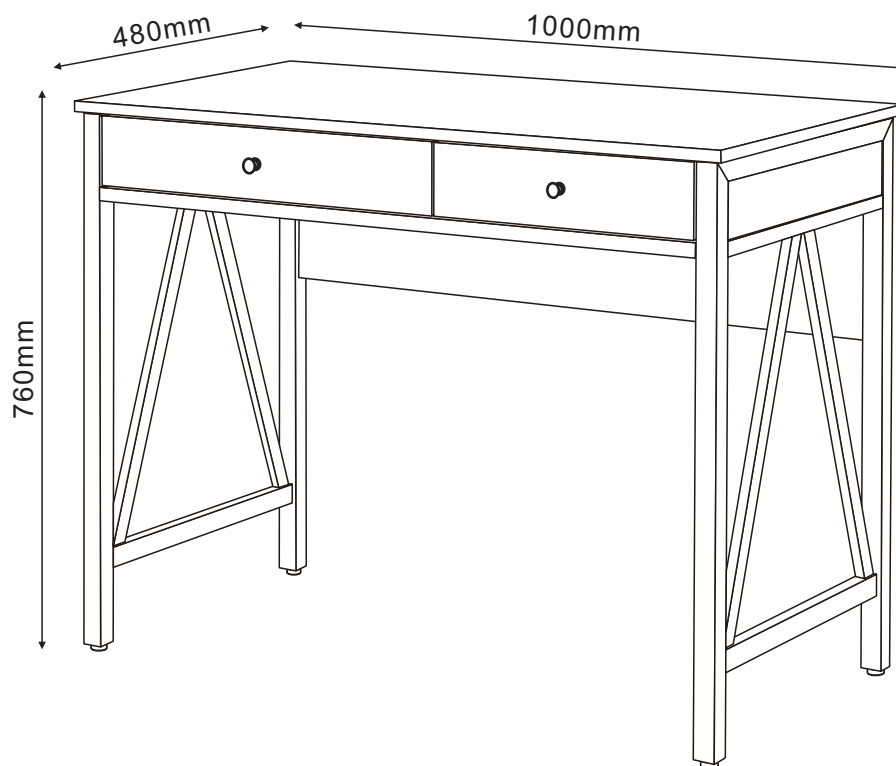


ASSEMBLY INSTRUCTION

CALDERON

Desk

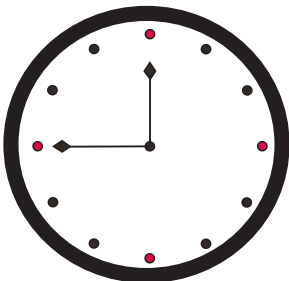
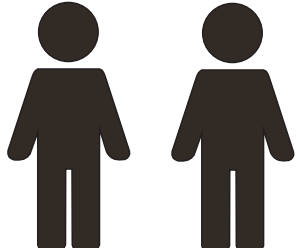
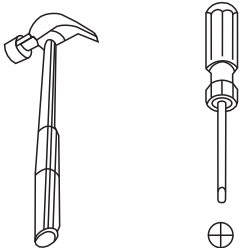
ITEM CODE 81863



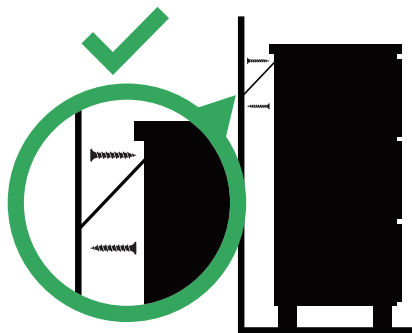
PRE-ASSEMBLY PREPARATION

Before you start:

1. Choose a clean, level, spacious assembly area. Avoid hard surfaces that may damage the product
2. Take care when lifting. Product should be assembled as near as possible to the point of use
3. Ensure that you have all required contents for complete assembly
4. Always read the assembly instructions carefully before beginning assembly.
5. Keep all hardware parts and packaging out of reach of small children.
6. Do not over tighten the screws and bolts as this may damage the threads

		
Allow 45min	For 2 person	Additional tools required

WARNING



Children have died from furniture tipover.

- ALWAYS secure it with an anchor device.
- NEVER allow children to stand, climb or hang on drawers, doors, or shelves.
- NEVER open more than one drawer at a time.
- Place heavy items down low

NEVER put a TV on this furniture



**This is a permanent label.
Do not remove!**

SAFETY BRACKETS INSTRUCTIONS

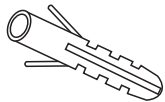
This furniture poses a tipping risk and as such must be secured to a wall using the provided tipping kit.

1. Attach one Mounting Plate to the wall with the Large Screws. Make sure to attach the Mounting Plate into a stud. If mounting into brick or masonry you will need to acquire wall anchors. Please enquire with your local hardware supplier for appropriate fixings.
2. Attach the second Mounting Plate to the furniture frame with the Short Screws.
3. Move the furniture to its final position. Thread a Wall Strap through the both Mounting Plates and tighten until snug. Do not over tighten.
4. Make sure that the Mounting Plates are firmly attached to the wall and furniture and that the Wall Strap is snug.

HARDWARE



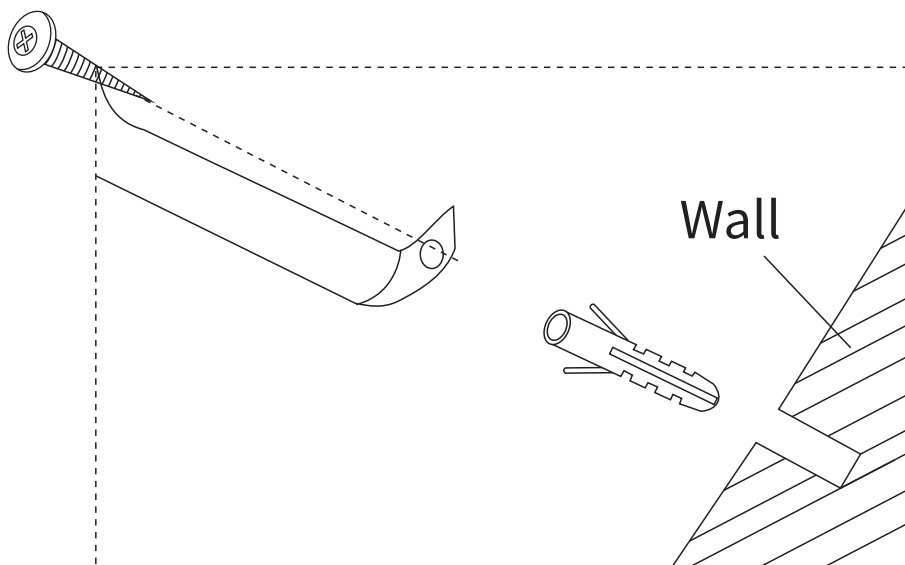
2pcs



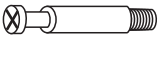
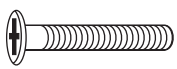
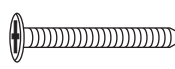
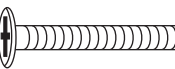
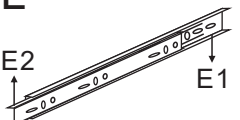
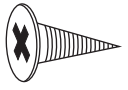
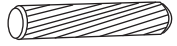


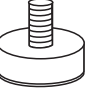



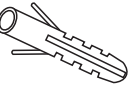
2pcs



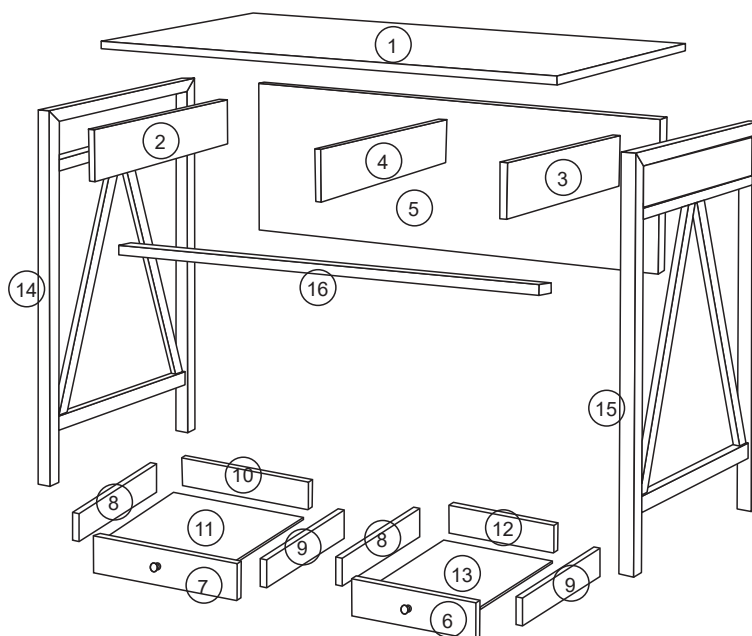
2pcs



PARTS LIST

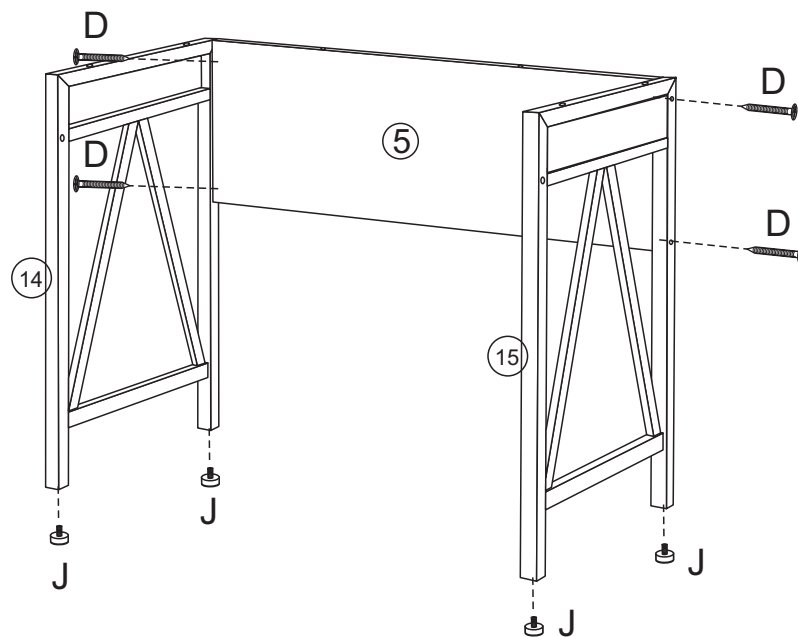
A  16pcs	B  M6X40 mm 6pcs	C  ST5X50mm 12pcs	D  ST5X60mm 4pcs	E  4pcs
F  ST3.5X14mm 18pcs	G  6pcs	H  M4X18mm 2pcs	I  2pcs	J  M8X20X10mm 4pcs
K  16pcs	L  ST4X25mm 2pcs	M  2pcs	N  2pcs	

1	Top panel
2	Left side panel
3	Right side panel
4	Middle panel
5	Back panel
6	Small drawer front panel
7	Big drawer front panel
8	Drawer left side panel
9	Drawer right side panel
10	Big drawer back panel
11	Big drawer bottom panel
12	Small drawer back panel
13	Small drawer bottom panel
14	Left main frame
15	Right main frame
16	Connecting tube



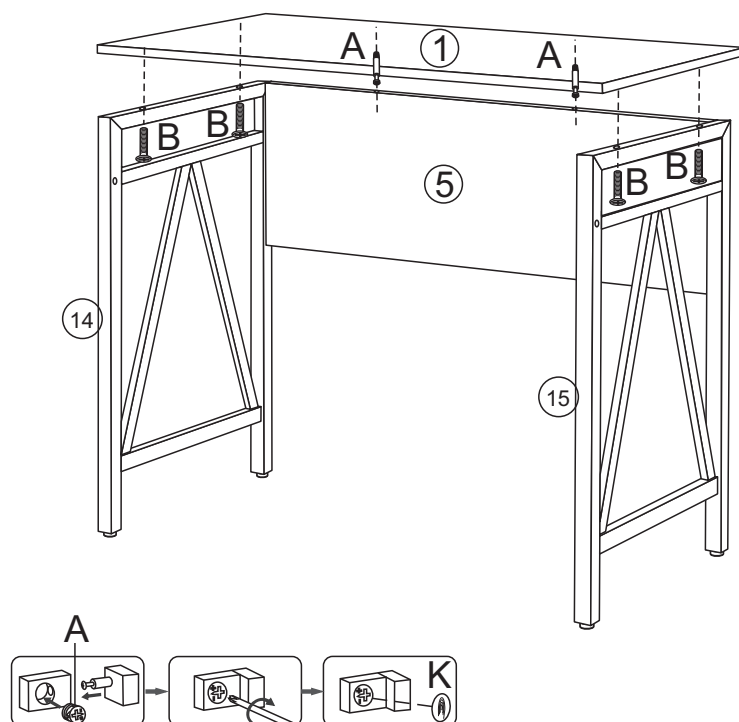
STEP 1:

1. Screw J to 14 and 15.
2. Attach 14, 15 to panel 5 with part D.



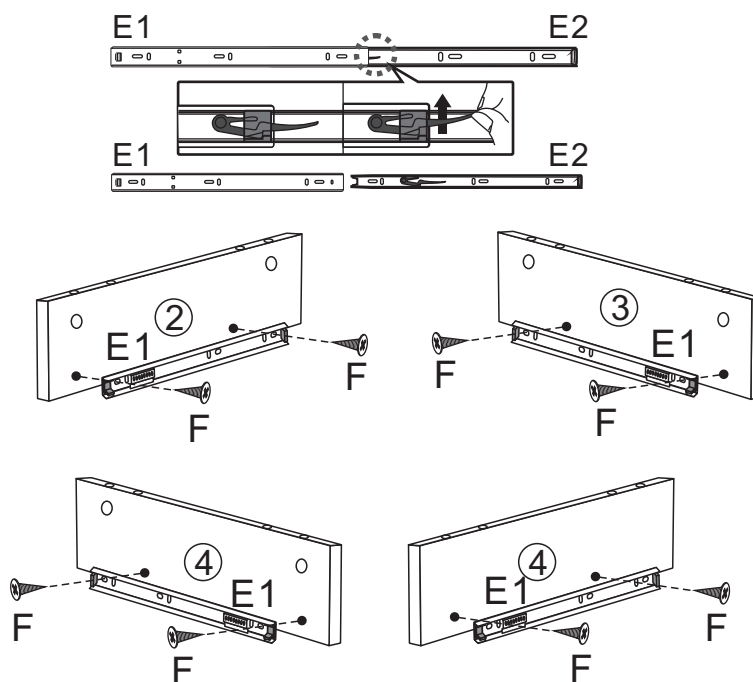
STEP 2:

1. Attach panel 5 to panel 1 with part A.
2. Attach panel 1 to frame 14 and 15 with part B.
3. Then twist A as the instruction show, then stick K.



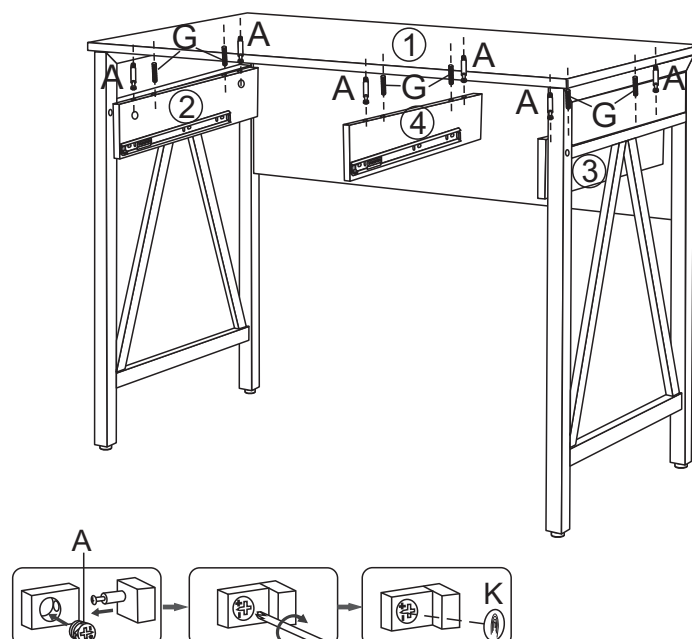
STEP 3:

1. Attach E1 to Panel 2, 3, 4 with part F as instruction shown.



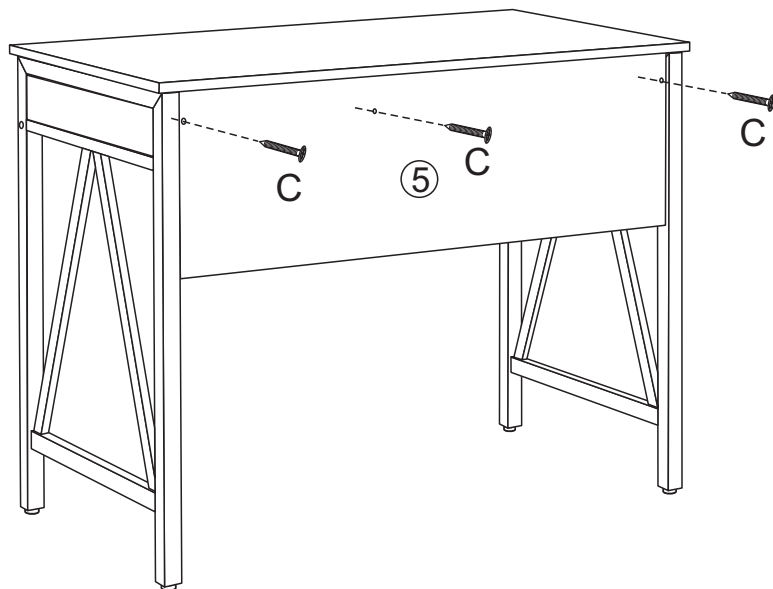
STEP 4:

1. Attach panel 2, 3 and 4 to panel 1 with parts A and G. Then twist A and stick K as instruction shown.



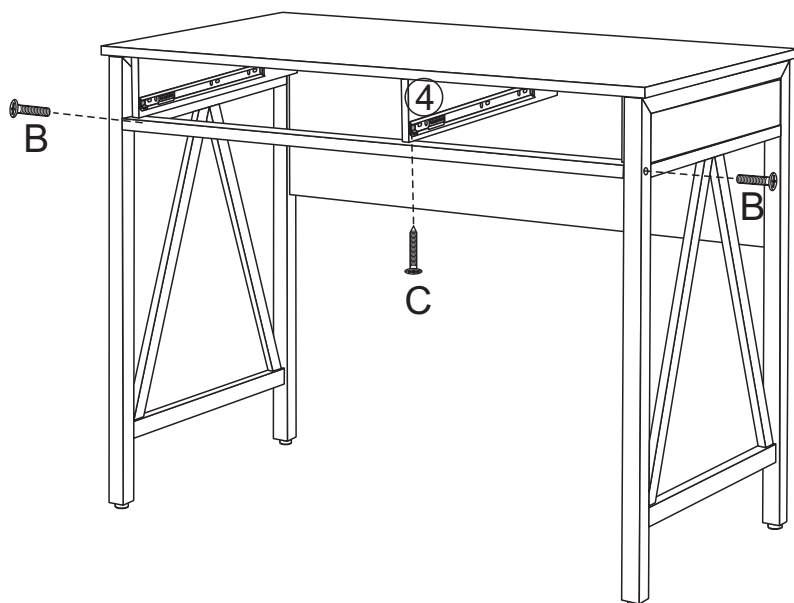
STEP 5:

1. Twist screw C as the instruction shown.



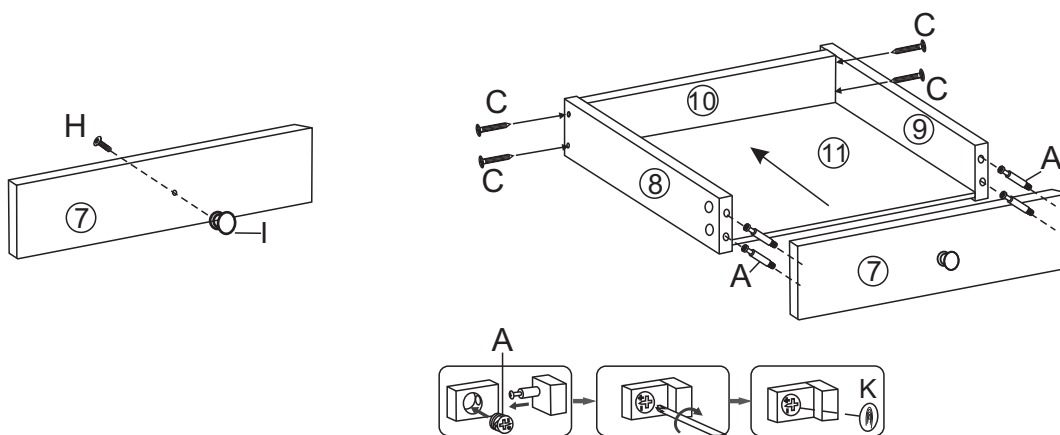
STEP 6:

1. Attach 16 to 14 and 15 with part B, attach 16 to panel 4 with part C.



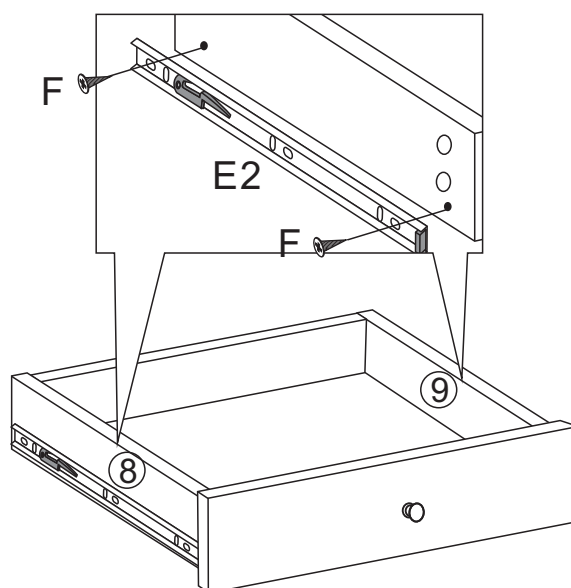
STEP 7:

1. Attach I to panel 7 with part H.
2. Attach panel 8 and 9 to panel 10 with part C. Insert bottom panel 11 as the instruction shown. Attach panel 7 to panel 8 and 9 with part A, twist A firmly and stick K.



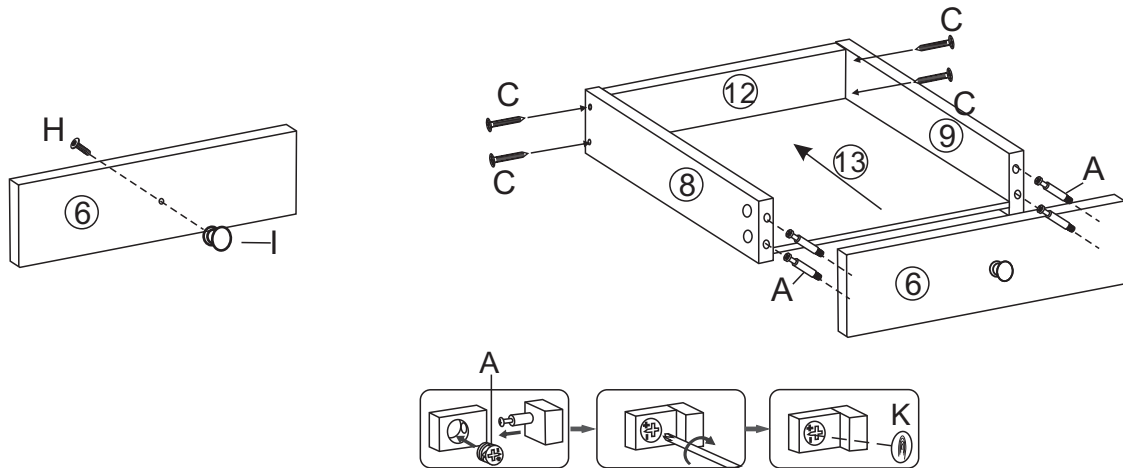
STEP 8:

1. Attach E2 to panel 8 and panel 9 with part F.



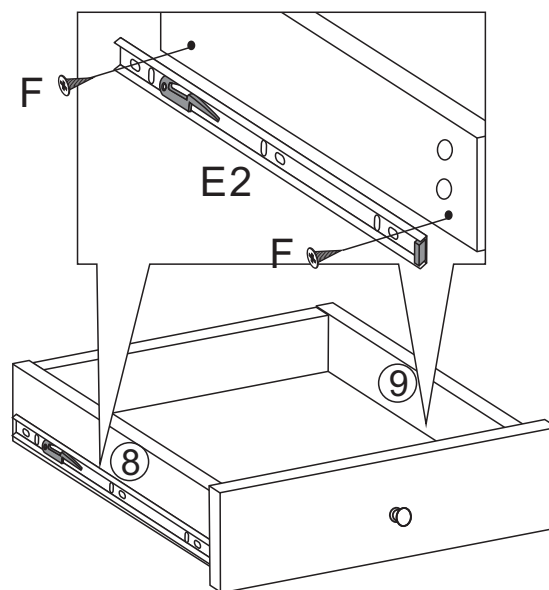
STEP 9:

1. Attach I to panel 6 with part H.
2. Attach panel 8 and 9 to panel 12 with part C. Insert panel 13 as instruction shown. Attach panel 6 to panel 8 and 9 with part A, twist A firmly and stick K.



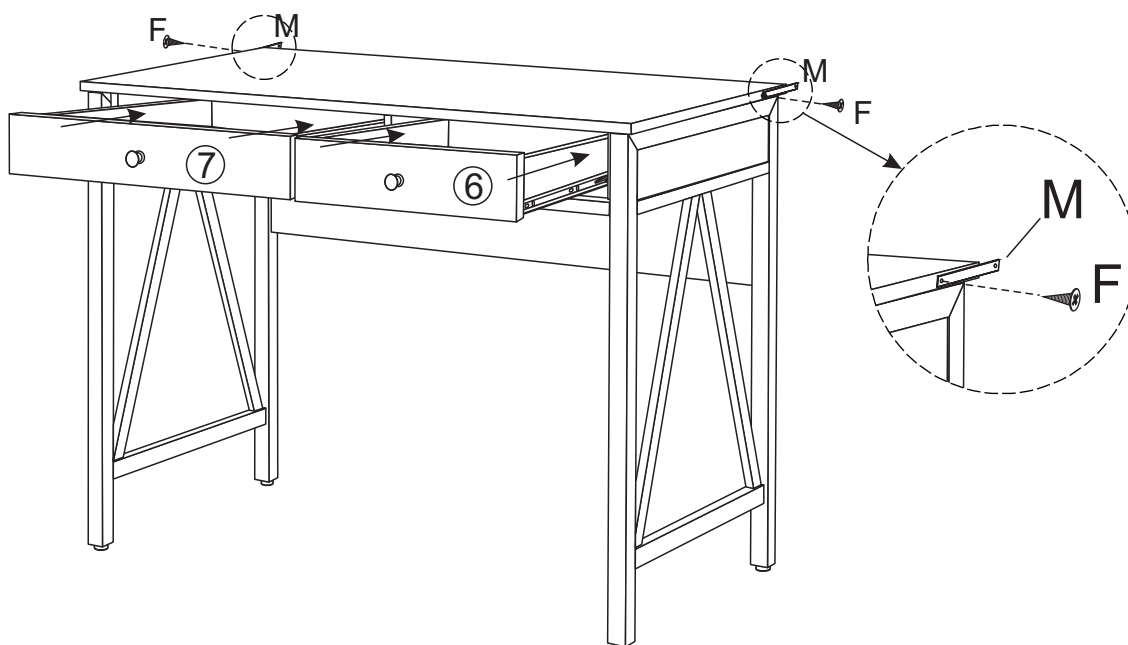
STEP 10:

1. Attach E2 to panel 8 and 9 with part F.

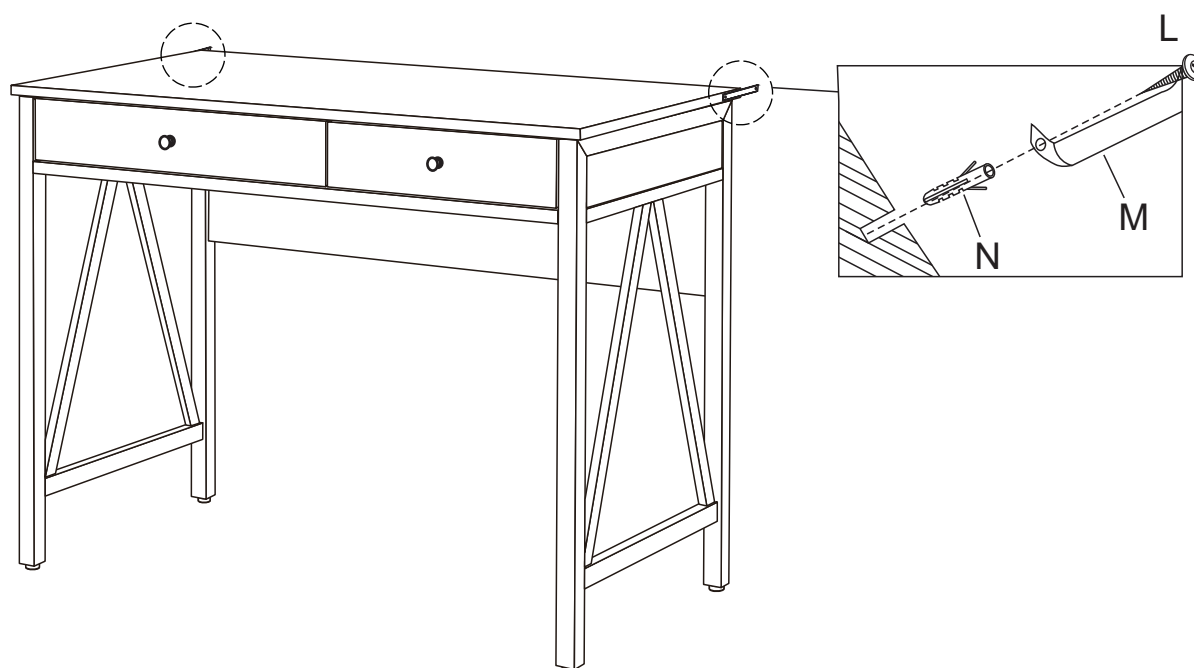


STEP 11:

1. Load assembled drawer 6 and 7 into the corresponding position of the main body as instruction shown.

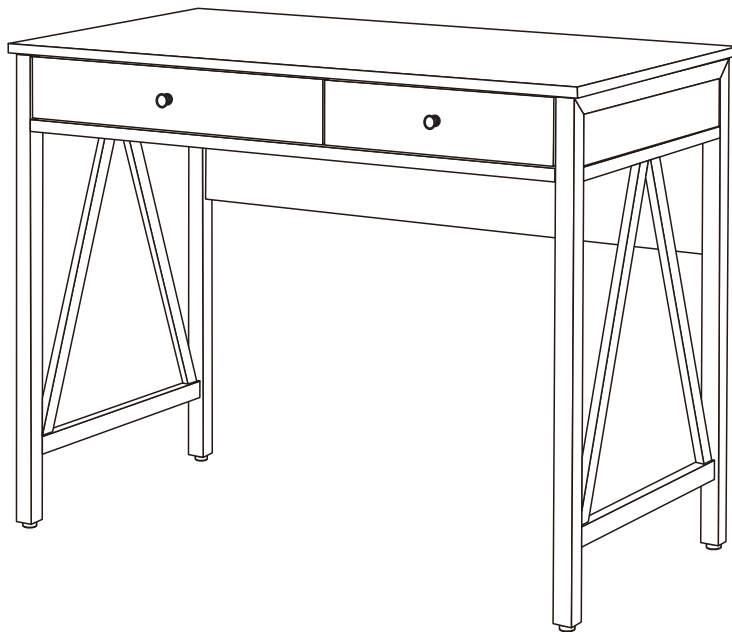


STEP 12:



STEP 13:

1.Assembly complete!



To protect your furniture, we suggest the following:

- Avoid placing your furniture in direct sunlight.
- Do not place furniture directly under windows.
- Do not place sharp materials (knife, fork, etc.) directly onto your furniture as sharp material may scrape and damage the finish.
- Do not place material with high temperature directly onto the surface of your furniture.
- Clean up spills quickly. Water left over a prolonged period of time may cause damage. Alcohol, perfume, nail polishes, aftershave and some medication may cause severe finish damage if not cleaned immediately.
- Use a clean, soft, dry, lint free absorbent cloth to clean your furniture. Do not use any detergent as they may contain ingredients that may react and damage the finish.

NOTE: If the above care advise is not adhered to your product warranty may become void